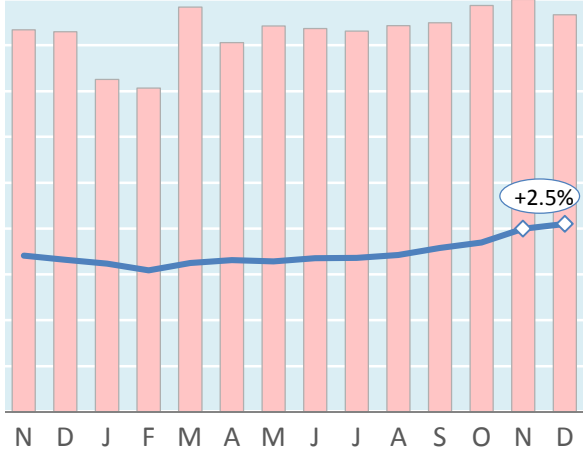


Actual Yields against Volume Development

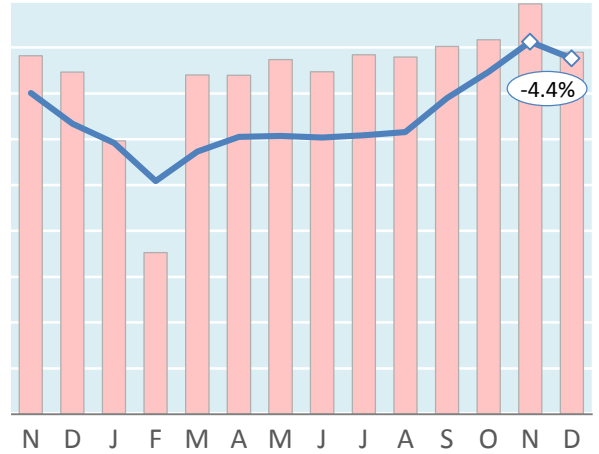
Latest 14 months — Actual yield including charges (in USD) ■ Chargeable weight development

Worldwide



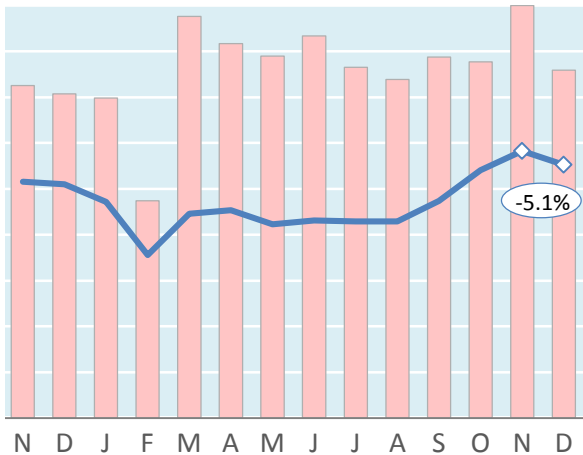
Nov '16 = \$1.70 Nov '17 = \$2.00 Dec '17 = \$2.05

Hong Kong to USA



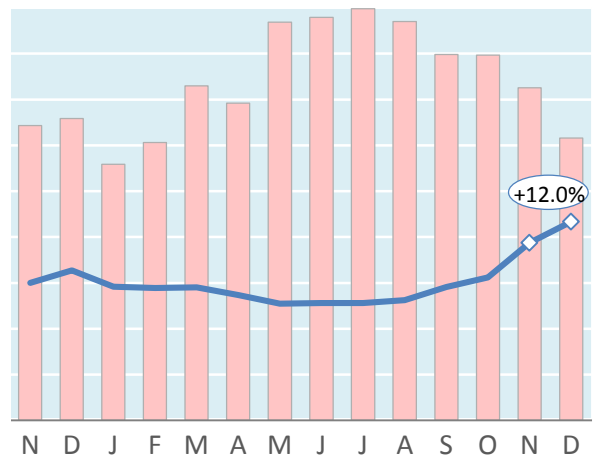
Nov '16 = \$3.50 Nov '17 = \$4.06 Dec '17 = \$3.88

Shanghai to Germany



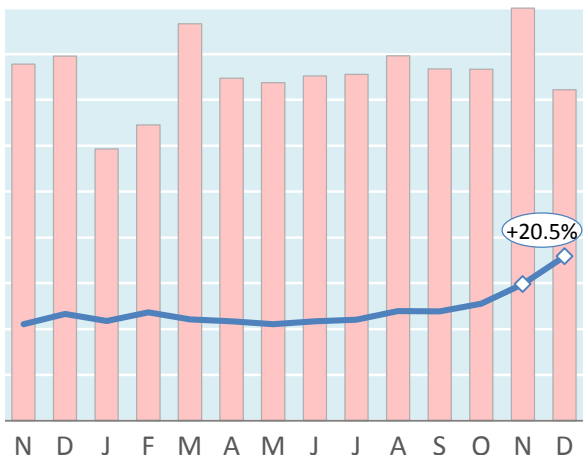
Nov '16 = \$2.58 Nov '17 = \$2.91 Dec '17 = \$2.76

Amsterdam to USA



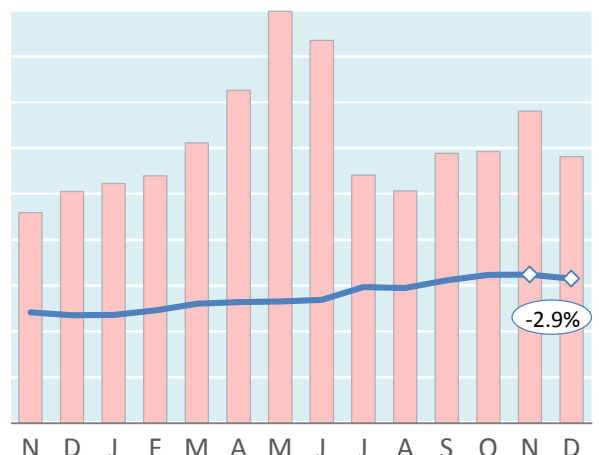
Nov '16 = \$1.50 Nov '17 = \$1.94 Dec '17 = \$2.17

Frankfurt to China



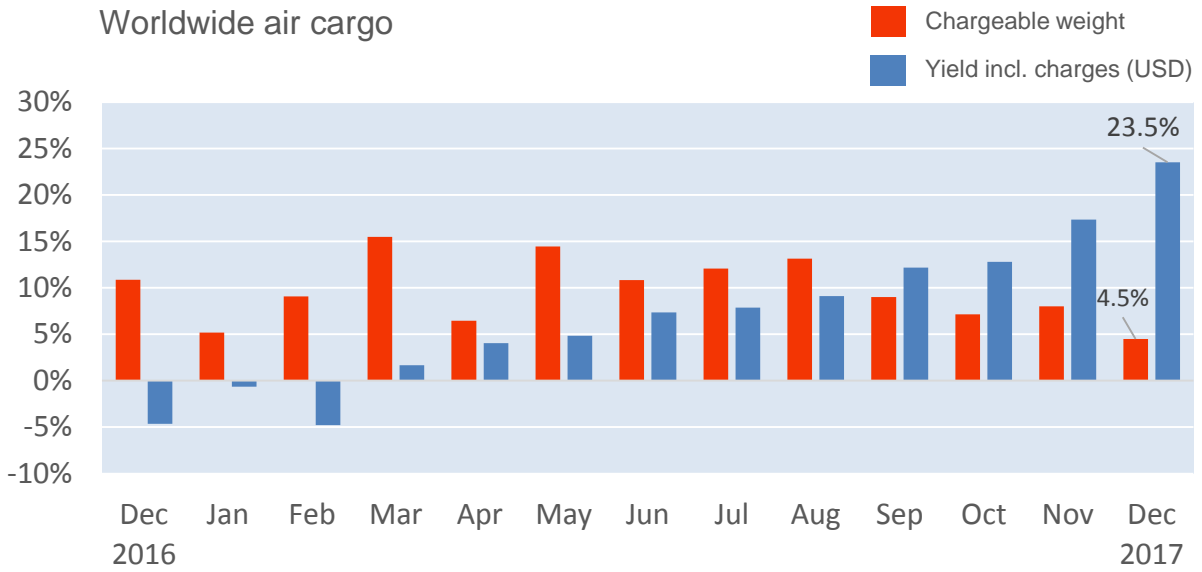
Nov '16 = \$1.05 Nov '17 = \$1.49 Dec '17 = \$1.79

Mumbai to UK



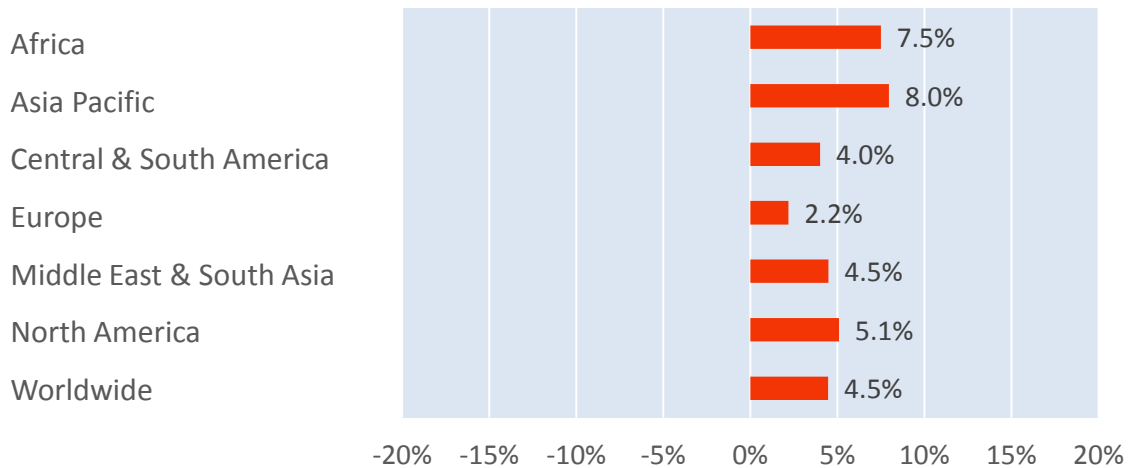
Nov '16 = \$1.21 Nov '17 = \$1.62 Dec '17 = \$1.57

Monthly Change Year-on-Year - Weight and Yield



Monthly Change Year-on-Year – Weight per Origin Region

Chargeable weight (Dec 2017)



Monthly Change Year-on-Year – Weight per Product Category

Chargeable weight (Dec 2017)

